

Broaching

Deburring

Automation

rausch

MASCHINENFABRIK



AKKERMANS
INDUSTRIAL ENGINEERING



GRATOMAT® **rausch**



The Company

Who is **rausch** ?

- Rausch is a medium-sized family owned company.

What does **rausch** do?

- Rausch is a specialised manufacturer of metal cutting machine tools used for broaching and deburring applications, including equipment automation.

How long has **rausch** been in existence?

- The company was established in 1919 as a machine tool fitting workshop in Haan, Germany.

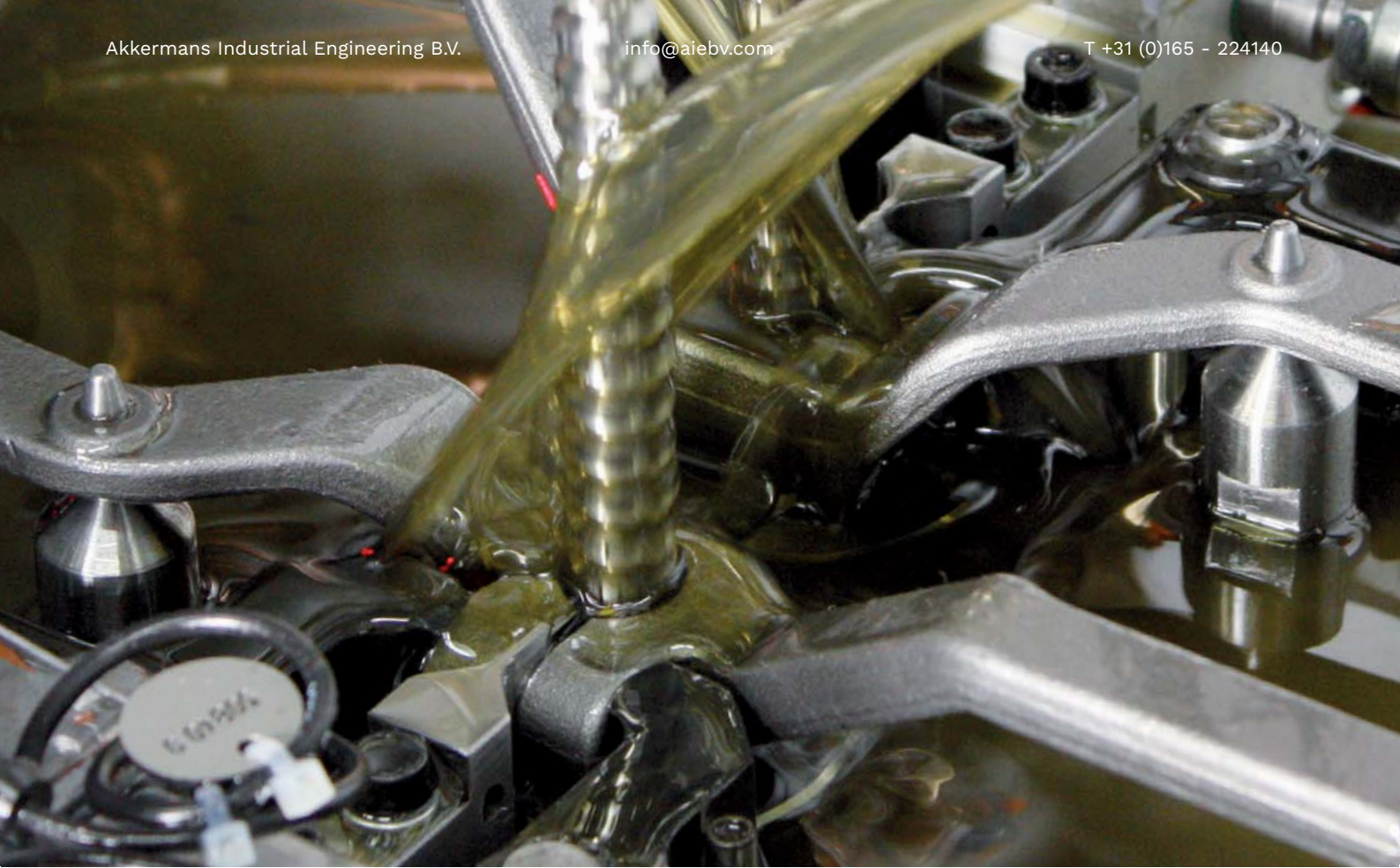
What distinguishes **rausch** ?

- Technological know-how which has been continuously elaborated and developed over decades.
- Extensive process expertise as demonstrated by over 5,000 machines installed around the world.
- High flexibility and fast reaction time.
- Individual consultancy.
- Global after sales service.

What are the objectives of **rausch** ?

- To realize the best and most economical solutions for the tasks of today and tomorrow in close cooperation with our international customers.





Broaching is our Business

Talking about broaching with quality in mind means *rausch* !

Our broaching machines range from simple, manually operated solutions right through to inter-linked cells with integrated processes. If parts are to be mass-produced, we will develop and build customised solutions with automated workpiece and tool handling.

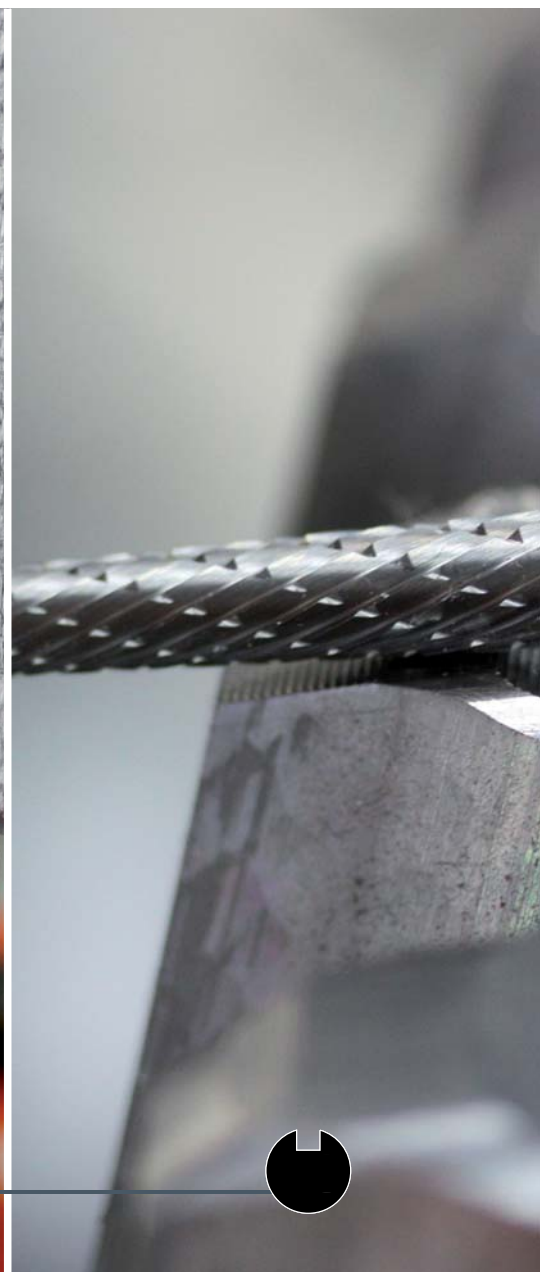
Broaching – turn key – for Rausch also includes tool planning, production and a re-sharpening service with the added benefits gained from our know-how through supplying and grinding many thousands of broaching tools.

Deburring and Chamfering – The Right Technology for Every Requirement

We have mastered various processes in the field of deburring technology. Our Gratomat® machines utilise carbide tools, or grinding wheels, for deburring and chamfering of tooth edges in a flexible process that is particularly suited to – but not restricted to – medium-sized production batches and large gearwheels. Additionally, where mass production is concerned, many gearbox manufacturers rely on our proven roll-press deburring technology.

Brush units are applied for less demanding chamfer geometries or for re-working previously milled or ground chamfers.

Robot deburring is an option allowing for a high degree of efficiency with various gearwheel types and small batch sizes.

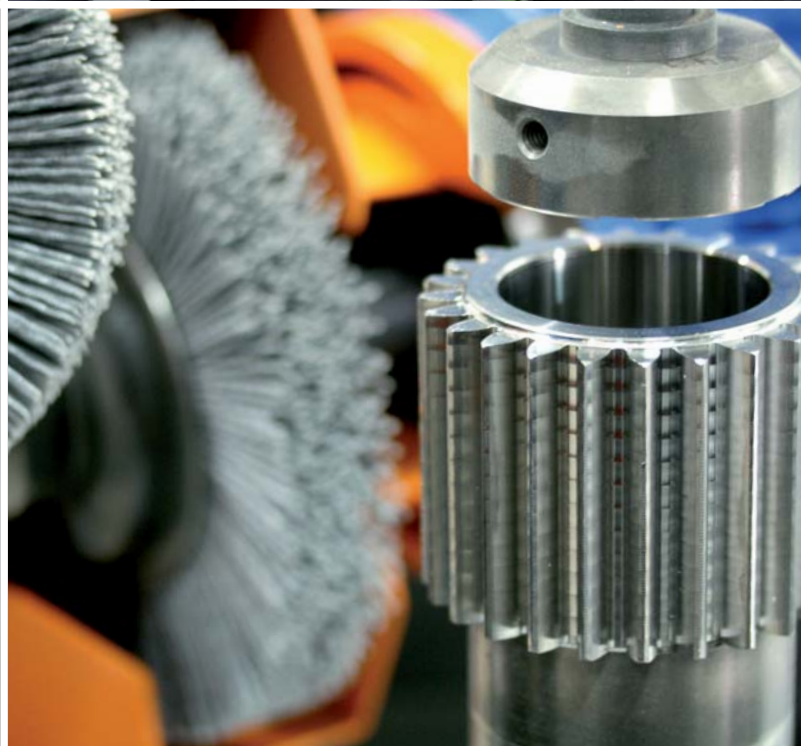
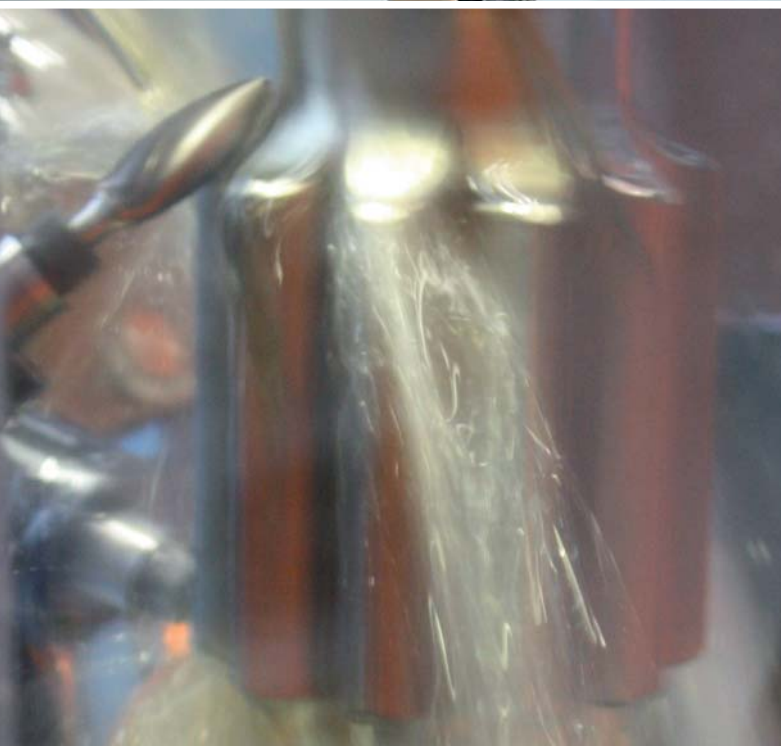
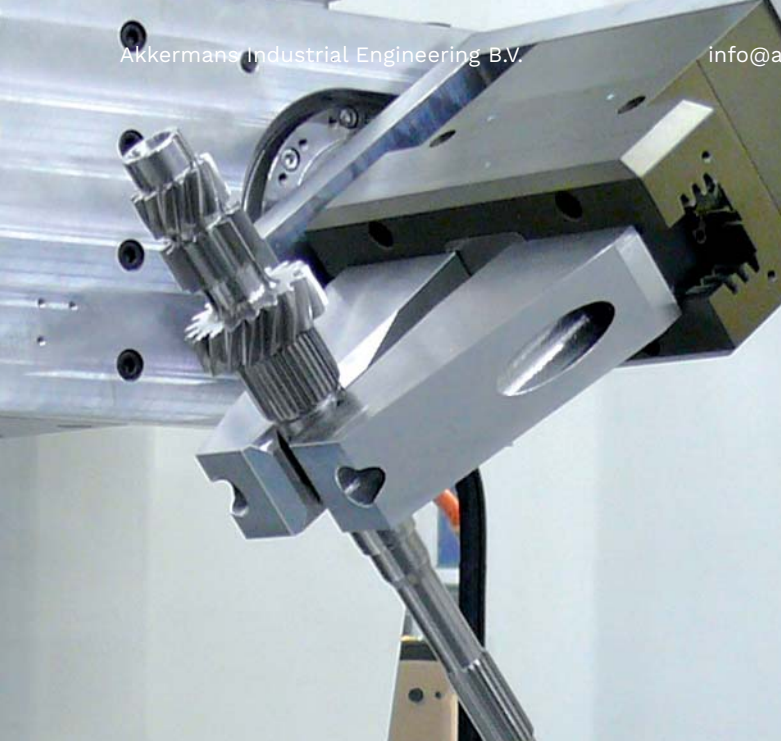


GRATOMAT® – A Versatile Machining Process

We also offer great variety within our individual product lines. The Gratomat® product range covers everything from small, manually loaded single spindle machines, with one chamfering and brush unit, right through to fully automated systems with single or multi-spindle systems, as stand-alone manufacturing cells, or integrated into complex production lines, with Gratomat® ensuring high quality within the shortest cycle times.

All of the available processes can be supplied in environmentally friendly dry, or wet, machining applications, depending on the subsequent manufacturing operations.





Automation – 100% Customised

rausch automation systems for loading, unloading and work-piece buffering allow machines to be integrated in interlinked production facilities. Our automation range for example includes lift and turn type loaders, smaller and larger gantry loaders, belt systems for workpiece transport, workpiece magazines, and handling robots.

All systems are of a modular design, allowing optimal integration into an existing workflow.

Consultancy – Individual and Competent

Specific user requirements are addressed in the design of *rausch* machines. The earlier our specialists are involved in the project planning stage, the greater will the realizable optimization potential be for our client. Trial and sample machining processes performed in our well-equipped Technology Centre ensure that Rausch will always find the best solution for the respective machining task.

Service – Immediately On-Site

Our fast service is available throughout the World and a web-based remote service platform enables our engineers to provide immediate assistance and hence offer a valuable contribution to maintaining the availability of your production.



rausch

MASCHINENFABRIK



AKKERMANS
INDUSTRIAL ENGINEERING





info@aiebv.com

T +31 (0)165 224140

www.aiebv.com

AKKERMANS INDUSTRIAL ENGINEERING B.V.

Vijfhuizenberg 103A • 4708AJ Roosendaal (Noord-Brabant) • Nederland

T (+31) 0165 224140 • info@aiebv.com • www.aiebv.com

KvK 20040320 • BTW nr. 005358012B01 • IBAN NL33 RABO 0141 2525 10 • BIC RABONL2U