

BM-252

catalogi.online



Brighetti
Machine-toebehoren
- Verloopphulzen

BRIGHETTI MECCANICA

Made in Italy since 1977

2026/03/30



Bussole di riduzione *Reduction bushes*



I Le bussole di riduzione con battuta consentono il fissaggio di barení o punte con codolo cilindrico o a cono morse su portautensili di macchine a controllo numerico.

La nostra produzione di bussole si articola su diversi tipi:

- > bussole cilindriche con fissaggio dell'utensile a mezzo di grani
- > bussole cilindriche asolate con fissaggio diretto dell'utensile
- > bussole coniche
- > bussole con passaggio del refrigerante
- > bussole elastiche
- > bussole elastiche per barre antivibranti

Per ogni tipo sono previste diverse misure formando così una gamma completa che può soddisfare le più svariate esigenze.

GB The reduction bushes with flanges allow boring bars or drills with a cylindrical shaft or clamp cone to be fixed to the tool holders of numerically controlled machine tools.

Five different types of bushes are available:

- > Cylindrical bushes to be fixed to tool by means of screws
- > Cylindrical slotted bushes to be directly fastened to tool
- > Conical bushes
- > Bushes with flow of cooling liquid
- > Elastic bushes
- > Elastic bushes for vibration damper bar

We manufacture each type of bush in different sizes, in order to offer a complete range capable of meeting every need.

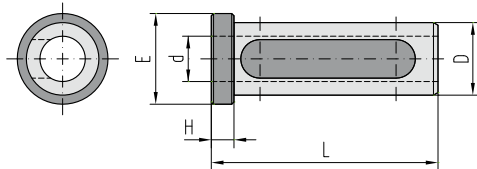


2026/03/30



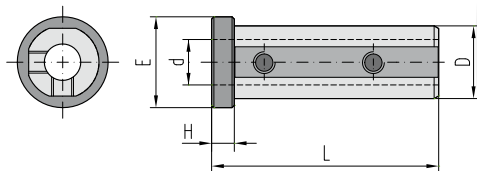
BUSOLE CILINDRICHE
CYLINDRICAL BUSHES

D=16 mm

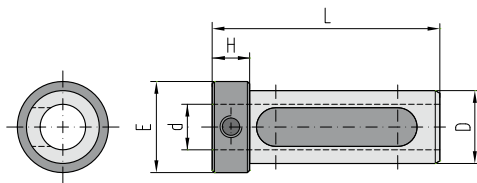


ARTICOLO-ITEM	D h7	d H7	L	H	E
B-16-6-50	16	6	50	5	20
B-16-8-50	16	8	50	5	20
B-16-10-50	16	10	50	5	20
B-16-12-50	16	12	50	5	20

D=19,05 mm (3/4")

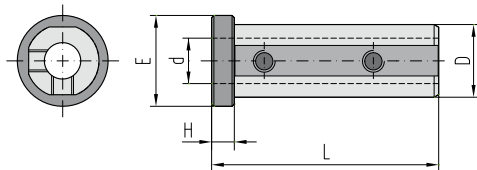


ARTICOLO-ITEM	D h7	d H7	L	H	E
B19,05-6-60	19,05	6	60	6	27
B19,05-8-60	19,05	8	60	6	27
B19,05-10-60	19,05	10	60	6	27

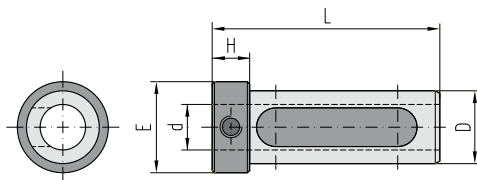


ARTICOLO-ITEM	D h7	d H7	L	H	E
B19,05-12-60	19,05	12	60	10	27
B19,05-14-60	19,05	14	60	10	27
B19,05-16-60	19,05	16	60	10	27

D=20 mm



ARTICOLO-ITEM	D h7	d H7	L	H	E
B20-6-60	20	6	60	6	27
B20-8-60	20	8	60	6	27
B20-10-60	20	10	60	6	27



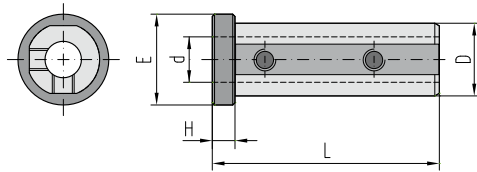
ARTICOLO-ITEM	D h7	d H7	L	H	E
B20-12-60	20	12	60	10	27
B20-14-60	20	14	60	10	27
B20-16-60	20	16	60	10	27



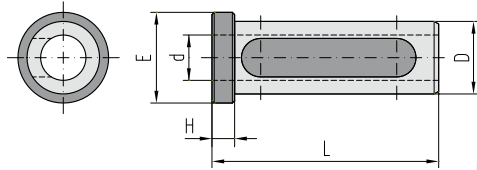
2026/03/30



D=22 mm

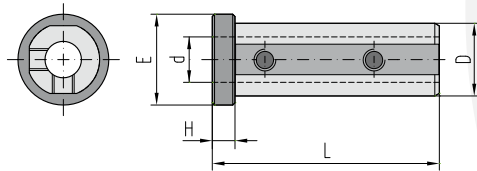


ARTICOLO-ITEM	D h7	d H7	L	H	E
B22-6-60	22	6	60	6	28
B22-8-60	22	8	60	6	28
B22-10-60	22	10	60	6	28

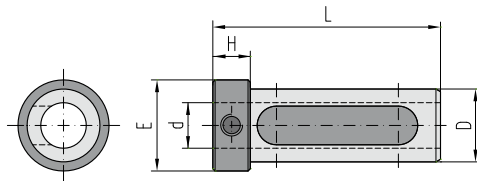


ARTICOLO-ITEM	D h7	d H7	L	H	E
B22-12-60	22	12	60	6	28
B22-14-60	22	14	60	6	28
B22-16-60	22	16	60	6	28

D=25 mm

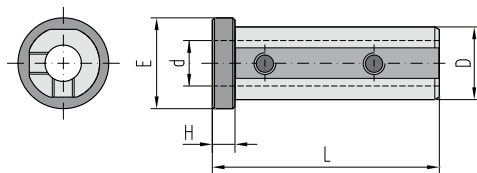


ARTICOLO-ITEM	D h7	d H7	L	H	E
B25-6-60	25	6	60	6	33
B25-8-60	25	8	60	6	33
B25-10-60	25	10	60	6	33
B25-12-60	25	12	60	6	33

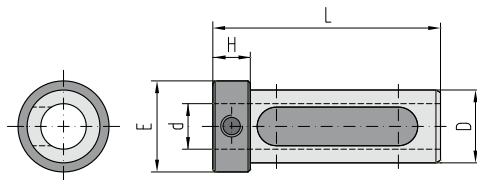


ARTICOLO-ITEM	D h7	d H7	L	H	E
B25-14-70	25	14	70	13	33
B25-16-70	25	16	70	13	33
B25-18-70	25	18	70	13	33
B25-20-70	25	20	70	13	33

D=25,40 mm (1")



ARTICOLO-ITEM	D h7	d H7	L	H	E
B25,40-6-60	25,40	6	60	6	33
B25,40-8-60	25,40	8	60	6	33
B25,40-10-60	25,40	10	60	6	33
B25,40-12-60	25,40	12	60	6	33



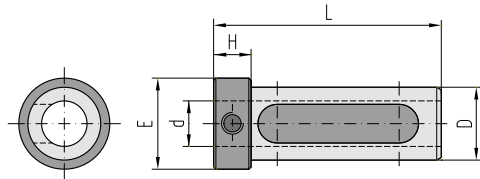
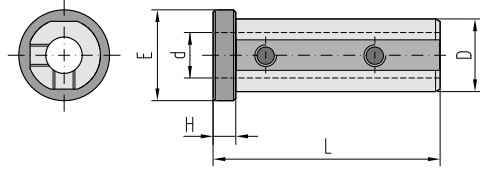
ARTICOLO-ITEM	D h7	d H7	L	H	E
B25,40-14-70	25,40	14	70	13	33
B25,40-16-70	25,40	16	70	13	33
B25,40-18-70	25,40	18	70	13	33
B25,40-20-70	25,40	20	70	13	33



2026/03/30



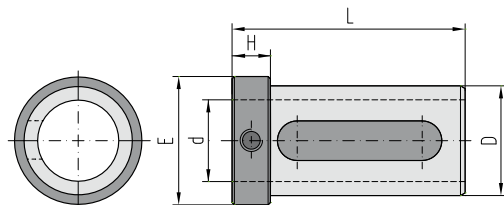
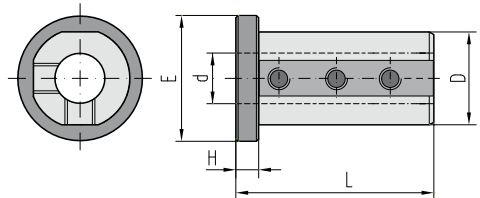
D=32 mm



ARTICOLO-ITEM	D h7	d H7	L	H	E
B32-6-60	32	6	60	6	39
B32-8-70	32	8	70	8	39
B32-10-70	32	10	70	8	39
B32-12-70	32	12	70	8	39
B32-14-70	32	14	70	8	39
B32-16-70	32	16	70	8	39
B32-18-70	32	18	70	8	39
B32-20-70	32	20	70	8	39

ARTICOLO-ITEM	D h7	d H7	L	H	E
B32-25-80	32	25	80	15	39

D=40 mm



ARTICOLO-ITEM	D h7	d H7	L	H	E
B40-6-60	40	6	60	6	49
B40-8-80	40	8	80	8	49
B40-10-80	40	10	80	8	49
B40-12-80	40	12	80	8	49
B40-14-80	40	14	80	8	49
B40-16-80	40	16	80	8	49
B40-18-80	40	18	80	8	49
B40-20-80	40	20	80	8	49
B40-25-80	40	25	80	8	49

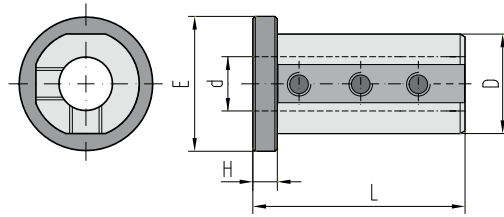
ARTICOLO-ITEM	D h7	d H7	L	H	E
B40-20-90	40	20	90	15	49
B40-25-90	40	25	90	15	49
B40-32-90	40	32	90	15	49



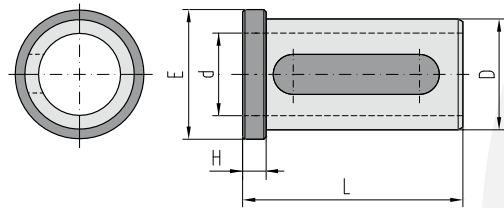
2026/03/30



D=45 mm

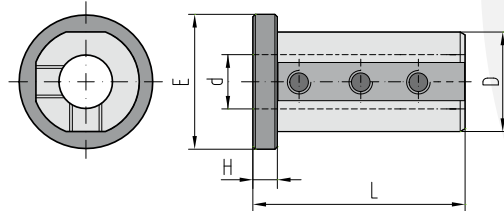


ARTICOLO-ITEM	D h7	d H7	L	H	E
B45-8-80	45	8	80	8	54
B45-10-80	45	10	80	8	54
B45-12-80	45	12	80	8	54
B45-16-80	45	16	80	8	54
B45-20-80	45	20	80	8	54
B45-25-80	45	25	80	8	54

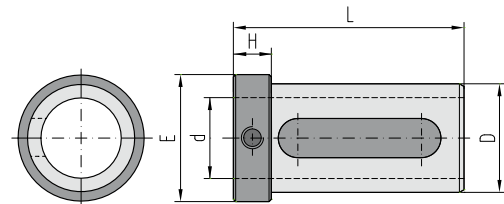


ARTICOLO-ITEM	D h7	d H7	L	H	E
B45-32-80	45	32	80	8	54
B45-40-80	45	40	80	8	54

D=50 mm

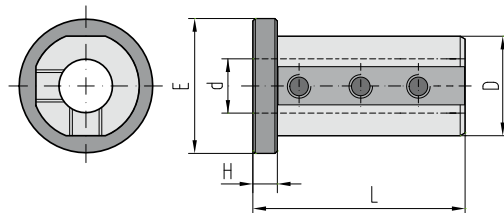


ARTICOLO-ITEM	D h7	d H7	L	H	E
B50-8-90	50	8	90	8	59
B50-10-90	50	10	90	8	59
B50-12-90	50	12	90	8	59
B50-14-90	50	14	90	8	59
B50-16-90	50	16	90	8	59
B50-18-90	50	18	90	8	59
B50-20-90	50	20	90	8	59
B50-25-90	50	25	90	8	59
B50-32-90	50	32	90	8	59

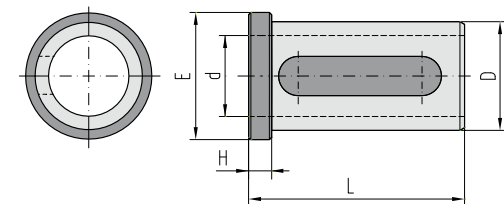


ARTICOLO-ITEM	D h7	d H7	L	H	E
B50-40-100	50	40	100	15	59

D=60 mm



ARTICOLO-ITEM	D h7	d H7	L	H	E
B60-12-97	60	12	97	8	69
B60-16-97	60	16	97	8	69
B60-20-97	60	20	97	8	69
B60-25-97	60	25	97	8	69
B60-32-97	60	32	97	8	69

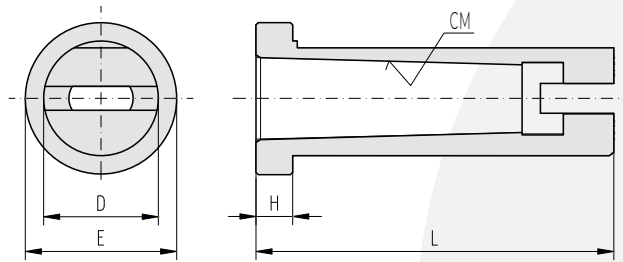


ARTICOLO-ITEM	D h7	d H7	L	H	E
B60-40-97	60	40	97	15	69
B60-50-97	60	50	97	15	69





BUSSOLE CONICHE
CONICAL BUSHES



D=25 mm

ARTICOLO-ITEM	D h7	CM	L	H	E
BC25-1-65	25	1	65	6	33
BC25-2-78	25	2	78	8	33

D=25,40 mm (1")

ARTICOLO-ITEM	D h7	CM	L	H	E
BC25,40-1-65	25,40	1	65	6	33
BC25,40-2-78	25,40	2	78	8	33

D=32 mm

ARTICOLO-ITEM	D h7	CM	L	H	E
BC32-1-65	32	1	65	6	39
BC32-2-78	32	2	78	8	39
BC32-3-97	32	3	97	8	39

D=40 mm

ARTICOLO-ITEM	D h7	CM	L	H	E
BC40-1-65	40	1	65	6	49
BC40-2-78	40	2	78	8	49
BC40-3-97	40	3	97	8	49
BC40-4-120	40	4	120	8	49

D=45 mm

ARTICOLO-ITEM	D h7	CM	L	H	E
BC45-2-78	45	2	78	8	54
BC45-3-97	45	3	97	8	54
BC45-4-120	45	4	120	8	54

D=50 mm

ARTICOLO-ITEM	D h7	CM	L	H	E
BC50-2-78	50	2	78	8	59
BC50-3-97	50	3	97	8	59
BC50-4-120	50	4	120	8	59

D=60 mm

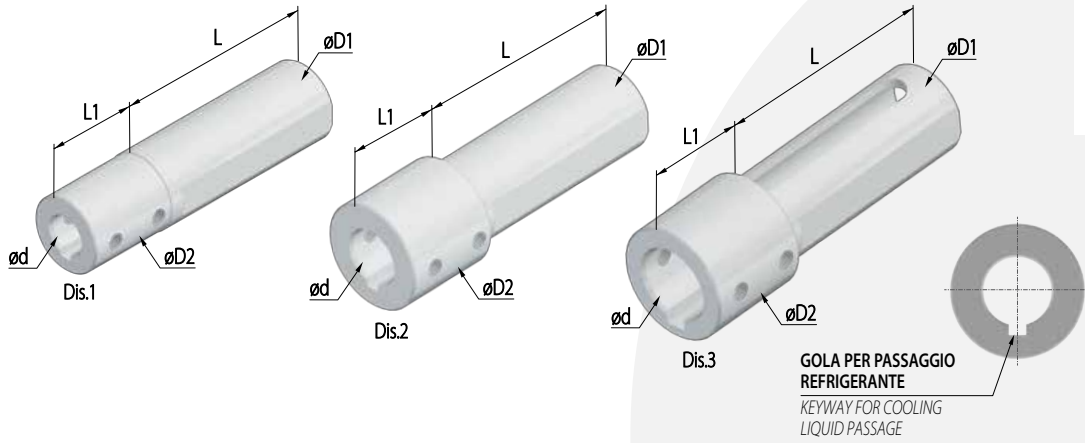
ARTICOLO-ITEM	D h7	CM	L	H	E
BC60-2-78	60	2	78	8	69
BC60-3-97	60	3	97	8	69
BC60-4-120	60	4	120	8	69
BC60-5-155	60	5	155	8	69



2026/03/30



BUSSE CON PASSAGGIO DEL REFRIGERANTE
BUSHES WITH FLOW OF COOLING LIQUID



D=25 mm

ARTICOLO-ITEM	D1 h7	D2	d H7	L	L1	Rif.-Ref.
BL 25-6	25	24,5	6	65	30	Dis.1
BL 25-8	25	24,5	8	65	30	Dis.1
BL 25-10	25	24,5	10	65	30	Dis.1
BL 25-12	25	24,5	12	65	30	Dis.1
BL 25-16	25	32	16	65	30	Dis.2
BL 25-20	25	32	20	65	30	Dis.3

D=32 mm

ARTICOLO-ITEM	D1 h7	D2	d H7	L	L1	Rif.-Ref.
BL 32-6	32	28	6	65	30	Dis.1
BL 32-8	32	28	8	65	30	Dis.1
BL 32-10	32	28	10	65	30	Dis.1
BL 32-12	32	28	12	65	30	Dis.1
BL 32-14	32	28	14	65	30	Dis.1
BL 32-16	32	28	16	65	30	Dis.1
BL 32-18	32	38	18	65	30	Dis.2
BL 32-20	32	38	20	65	30	Dis.2
BL 32-25	32	43	25	65	30	Dis.3

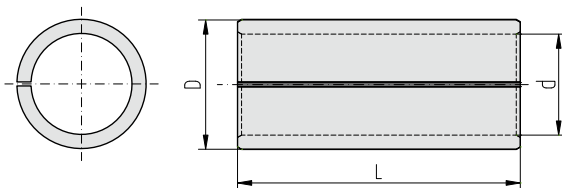
D=40 mm

ARTICOLO-ITEM	D1 h7	D2	d H7	L	L1	Rif.-Ref.
BL 40-6	40	31,5	6	65	30	Dis.1
BL 40-8	40	31,5	8	65	30	Dis.1
BL 40-10	40	31,5	10	65	30	Dis.1
BL 40-12	40	31,5	12	65	30	Dis.1
BL 40-14	40	31,5	14	65	30	Dis.1
BL 40-16	40	31,5	16	65	30	Dis.1
BL 40-18	40	47,5	18	65	30	Dis.2
BL 40-20	40	47,5	20	65	30	Dis.2
BL 40-25	40	47,5	25	65	30	Dis.2
BL 40-32	40	47,5	32	65	30	Dis.3

D=50 mm

ARTICOLO-ITEM	D1 h7	D2	d H7	L	L1	Rif.-Ref.
BL 50-12	50	40	12	65	30	Dis.1
BL 50-14	50	40	14	65	30	Dis.1
BL 50-16	50	40	16	65	30	Dis.1
BL 50-18	50	40	18	65	30	Dis.1
BL 50-20	50	40	20	65	30	Dis.1
BL 50-25	50	40	25	65	30	Dis.1
BL 50-32	50	56	32	65	30	Dis.2
BL 50-40	50	56	40	65	30	Dis.3

BUSSE ELASTICHE
ELASTIC BUSHES



ARTICOLO-ITEM	D h7	d H7	L
BE-16-12-40	16	12	40
BE-20-16-50	20	16	50
BE-25-20-60	25	20	60
BE-32-25-70	32	25	70
BE-40-32-80	40	32	80
BE-50-40-90	50	40	90



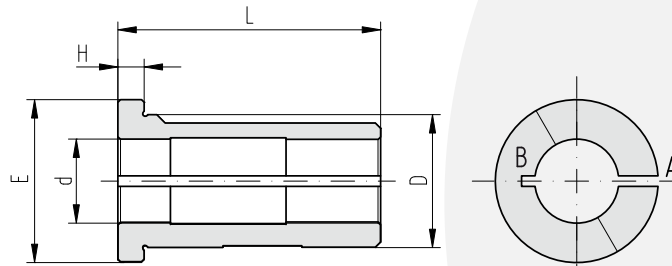


BUSSOLE ELASTICHE PER BARRE ANTIVIBRANTI ELASTIC BUSHES FOR VIBRATION DAMPER BARS

I Questo tipo di bussola è stata studiata per eliminare le vibrazioni dell'utensile inserito nella bussola durante la lavorazione.

Una speciale gomma antivibrante viene inserita nelle fessure "A" e "B" allo scopo di ammortizzare le vibrazioni che crea l'utensile durante la lavorazione in fori profondi.

GB This kind of bush has been developed to eliminate every vibration caused by the tool during the machining. "A" and "B" slots are filled with a special rubber in order to dampen the vibrations the tool creates when it works in deep holes.



D=25 mm

ARTICOLO-ITEM	D h6	d H7	L	H	E
BG 25-8-50	25	8	50	5	31
BG 25-10-50	25	10	50	5	31
BG 25-12-50	25	12	50	5	31
BG 25-16-50	25	16	50	5	31
BG 25-20-50	25	20	50	5	31

D=32 mm

ARTICOLO-ITEM	D h6	d H7	L	H	E
BG 32-8-60	32	8	60	5	39
BG 32-10-60	32	10	60	5	39
BG 32-12-60	32	12	60	5	39
BG 32-16-60	32	16	60	5	39
BG 32-20-60	32	20	60	5	39
BG 32-25-60	32	25	60	5	39

D=40 mm

ARTICOLO-ITEM	D h6	d H7	L	H	E
BG 40-8-75	40	8	75	5	48
BG 40-10-75	40	10	75	5	48
BG 40-12-75	40	12	75	5	48
BG 40-16-75	40	16	75	5	48
BG 40-20-75	40	20	75	5	48
BG 40-25-75	40	25	75	5	48
BG 40-32-75	40	32	75	5	48



2026/03/30



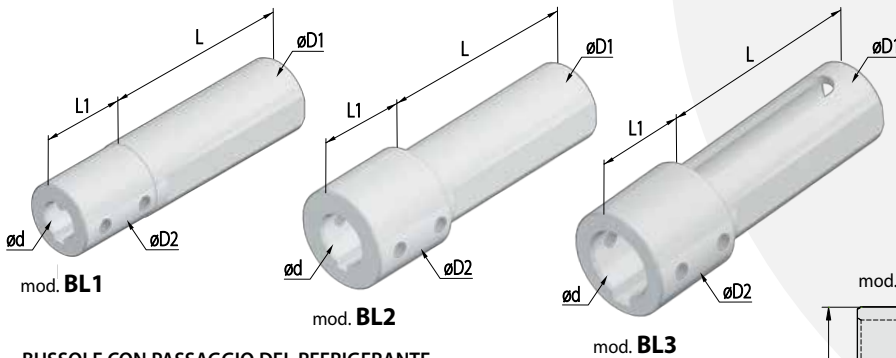
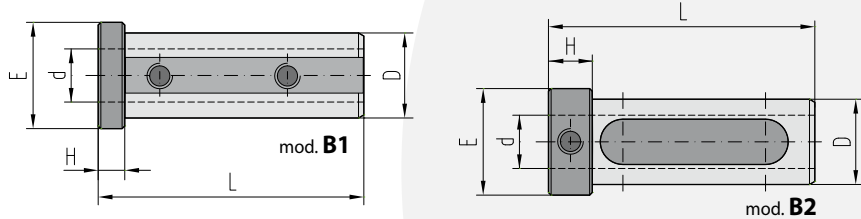
DISEGNO PER ORDINI DI BUSSOLE SPECIALI
 TECHNICAL DRAWING FOR ORDERING SPECIAL BUSHES

I Se siete interessati a bussole speciali non comprese nel presente Catalogo, inviateci questa pagina debitamente compilata; sarà nostra cura servirVi al meglio e con la massima tempestività.

GB If you are interested in special bushes, not included in this Catalogue, please fill this page in and send it to us: we shall do our best to provide you with prompt efficient service.

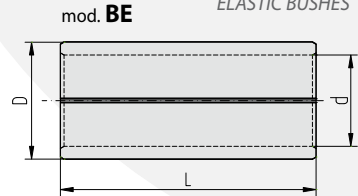
BRIGHETTI MECCANICA S.r.L. Tel./Phone: 0039 51 728168 E.mail: info@brighetti.it
 Società/Company: _____ Indirizzo/Address: _____
 Tel./Phone: _____ E-mail: _____
 Q.tà/Q.ty: _____

BUSSOLE CILINDRICHE
 CYLINDRICAL BUSHES

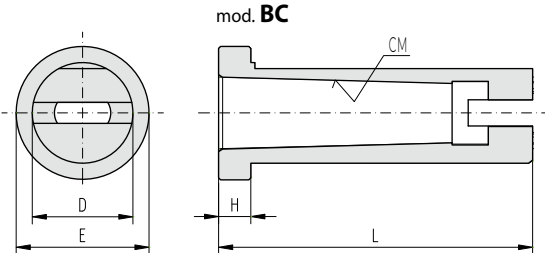


BUSSOLE CON PASSAGGIO DEL REFRIGERANTE
 BUSHES WITH FLOW OF COOLING LIQUID

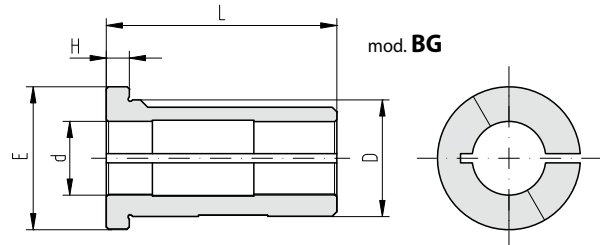
BUSSOLE ELASTICHE
 ELASTIC BUSHES



BUSSOLE CONICHE
 CONICAL BUSHES



BUSSOLE ELASTICHE PER BARRE ANTIVIBRANTI
 ELASTIC BUSHES FOR VIBRATION DAMPER BARS



mod.	d	L	L1	H	E	D	D1	D2	CM

Compilare la tabella, scegliendo il modello di Bussola di riduzione a cui si è interessati con la sua relativa sigla.
 Compilare poi manualmente il resto della tabella indicando le quote da ottenere
 Fill in the table, choosing the type of reduction Bush you are interested in with its relative code,
 then fill in manually and indicate the dimensions to obtain



2026/03/30



BRIGHETTI MECCANICA

*Made in Italy
since 1977*



2026/03/30



www.aiebv.com

AKKERMANS INDUSTRIAL ENGINEERING B.V.
Vijfhuizenberg 103A • 4708AJ Roosendaal (Noord-Brabant) • Nederland
T +31 (0)165 - 224140 • info@aiebv.com • www.aiebv.com
KvK 20040320 • BTW nr. 005358012B01
IBAN NL33 RABO 0141 2525 10