

BM-256

catalogi.online



Brighetti
Machine-toebehoren
- Aantrekbouten

BRIGHETTI MECCANICA

Made in Italy since 1977

2026/03/30



Tiranti-Codoli Puller-Pull studs



I Il Tirante, o Codolo, viene prodotto secondo le seguenti specifiche:

- > norma DIN 69872
- > norma ISO 7388/2A - 7388/2B
- > norma MAS 403 BT
- > norma MAS 403 BT TYPE I
- > norma MAS BT ANSI TYPE
- > norma CAT ANSI TYPE
- > norma ANSI BT 5,50 CATERPILLAR
- > norma BT (JIS B 6339)
- > FAMUP e CB FERRARI

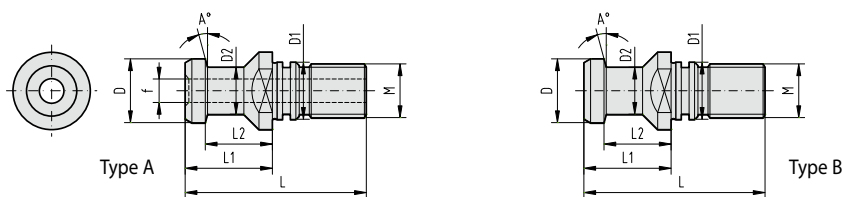
Vengono inoltre prodotti, su richiesta, tiranti per altre tipologie di macchine CNC.

GB The pullers, or pull studs, are manufactured according to the following specifications:

- > Standard DIN 69872
- > Standard ISO 7388/2A - 7388/2B
- > Standard MAS 403 BT
- > Standard MAS 403 BT TYPE I
- > Standard MAS BT ANSI TYPE
- > Standard CAT ANSI TYPE
- > Standard ANSI BT 5,50 CATERPILLAR
- > Standard BT (JIS B 6339)
- > FAMUP and CB FERRARI

Pull studs for other types of CNC machines are also available on request.

CODOLI A NORMA DIN 69872 STANDARD DIN 69872 PULL STUDS



| ARTICOLO-ITEM | TIPO-TYPE | f | CONO-SIZE | M | L | L1 +/-0,1 | L2 +/-0,1 | D f7 | D1 f7 | D2 -0,1 | A° |
|-----------------|-----------|------|-----------|----|----|-----------|-----------|------|-------|---------|-----|
| C12DIN69872/A * | A | 3 | 30 | 12 | 44 | 24 | 19 | 13 | 13 | 9 | 15° |
| C12DIN69872/B * | B | - | | | | | | | | | |
| C16DIN69872/A | A | 7 | 40 | 16 | 54 | 26 | 20 | 19 | 17 | 14 | 15° |
| C16DIN69872/B | B | - | | | | | | | | | |
| C20DIN69872/A | A | 9,5 | 45 | 20 | 65 | 30 | 23 | 23 | 21 | 17 | 15° |
| C20DIN69872/B | B | - | | | | | | | | | |
| C24DIN69872/A | A | 11,5 | 50 | 24 | 74 | 34 | 25 | 28 | 25 | 21 | 15° |
| C24DIN69872/B | B | - | | | | | | | | | |

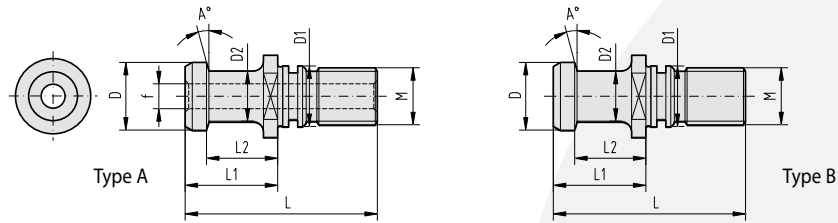
* Questo tirante è senza sede per O-Ring / * These pull studs do not have the O-Ring seat



2026/03/30



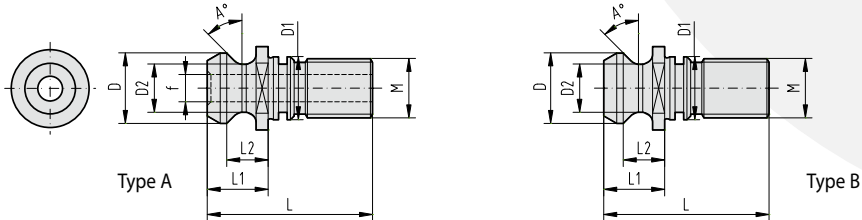
CODOLI A NORMA ISO 7388/2A
STANDARD ISO 7388/2A PULL STUDS



| ARTICOLO-ITEM | TIPO-TYPE | f | CONO-SIZE | M | L | L1 +/-0,1 | L2 +/-0,1 | D f7 | D1 h6 | D2 -0,1 | A° |
|-------------------|-----------|------|-----------|----|----|-----------|-----------|------|-------|---------|-----|
| C12ISO7388/2A/B * | B | - | 30 | 12 | 44 | 24 | 19 | 12 | 13 | 8 | 15° |
| C16ISO7388/2A/A | A | 7 | 40 | 16 | 54 | 26 | 20 | 19 | 17 | 14 | 15° |
| C16ISO7388/2A/B | B | - | | | | | | | | | |
| C20ISO7388/2A/A | A | 9,5 | 45 | 20 | 65 | 30 | 23 | 23 | 21 | 17 | 15° |
| C20ISO7388/2A/B | B | - | | | | | | | | | |
| C24ISO7388/2A/A | A | 11,5 | 50 | 24 | 74 | 34 | 25 | 28 | 25 | 21 | 15° |
| C24ISO7388/2A/B | B | - | | | | | | | | | |

* Questo tirante è senza sede per O-Ring / * These pull studs do not have the O-Ring seat

CODOLI A NORMA ISO 7388/2B
STANDARD ISO 7388/2B PULL STUDS



| ARTICOLO-ITEM | TIPO-TYPE | f | CONO-SIZE | M | L | L1 +/-0,15 | L2 +/-0,15 | D -0,3 | D1 h6 | D2 -0,3 | A° |
|-------------------|-----------|-------|-----------|----|-------|------------|------------|--------|-------|---------|-----|
| C12ISO7388/2B/A * | A | 4 | 30 | 12 | 34,00 | 11,65 | 8 | 13,35 | 13 | 9,3 | 45° |
| C16ISO7388/2B/A | A | 7,35 | 40 | 16 | 44,25 | 16,25 | 11 | 18,95 | 17 | 12,95 | 45° |
| C16ISO7388/2B/B | B | - | | | | | | | | | |
| C20ISO7388/2B/A | A | 9,25 | 45 | 20 | 56,00 | 20,95 | 14,85 | 24,05 | 21 | 16,30 | 45° |
| C20ISO7388/2B/B | B | - | | | | | | | | | |
| C24ISO7388/2B/A | A | 11,55 | 50 | 24 | 65,40 | 25,40 | 17,80 | 29,00 | 25 | 19,60 | 45° |
| C24ISO7388/2B/B | B | - | | | | | | | | | |

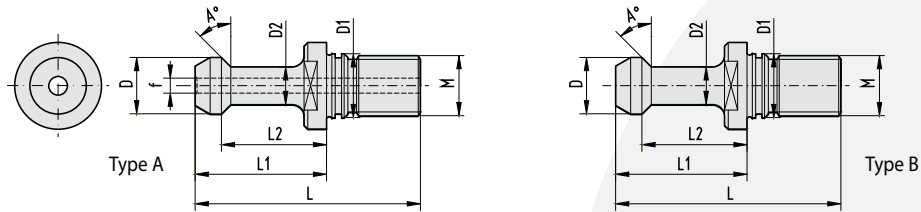
* Questo tirante è senza sede per O-Ring / * These pull studs do not have the O-Ring seat



2026/03/30



CODOLI A NORMA MAS 403 BT
STANDARD MAS 403 BT PULL STUDS

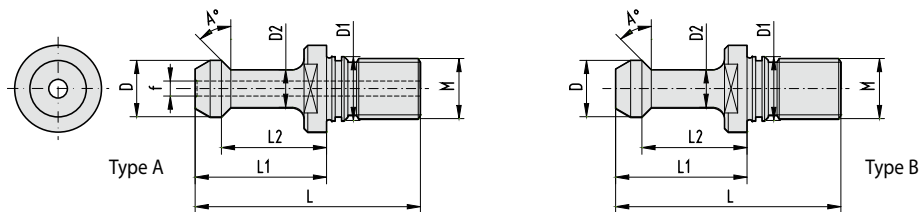


| ARTICOLO-ITEM | TIPO-TYPE | f | CONO-SIZE | M | L | L1 -0,1 | L2 -0,1 | D -0,1 | D1 h7 | D2 -0,1 | A° |
|---------------------|-----------|---|-----------|----|----|---------|---------|--------|-------|---------|----|
| C12MAS403BT30B30 * | B | - | 30 | 12 | 43 | 23 | 18 | 11 | 12,5 | 7 | 30 |
| C12MAS403BT30B45 * | B | - | 30 | 12 | 43 | 23 | 18 | 11 | 12,5 | 7 | 45 |
| C16MAS403BT40A30 | A | 4 | 40 | 16 | 60 | 35 | 28 | 15 | 17 | 10 | 30 |
| C16MAS403BT40B30 | B | - | | | | | | | | | |
| C16MAS403BT40A45 | A | 4 | 40 | 16 | 60 | 35 | 28 | 15 | 17 | 10 | 45 |
| C16MAS403BT40B45 | B | - | | | | | | | | | |
| C16MAS403BT40A90 | A | 4 | 40 | 16 | 60 | 35 | 28 | 15 | 17 | 10 | 90 |
| C16MAS403BT40B90 | B | - | | | | | | | | | |
| C20MAS403BT45B30 ** | B | - | 45 | 20 | 70 | 40 | 31 | 19 | 21 | 14 | 30 |
| C20MAS403BT45B45 ** | B | - | 45 | 20 | 70 | 40 | 31 | 19 | 21 | 14 | 45 |
| C24MAS403BT50A30 | A | 6 | 50 | 24 | 85 | 45 | 35 | 23 | 25 | 17 | 30 |
| C24MAS403BT50B30 | B | - | | | | | | | | | |
| C24MAS403BT50A45 | A | 6 | 50 | 24 | 85 | 45 | 35 | 23 | 25 | 17 | 45 |
| C24MAS403BT50B45 | B | - | | | | | | | | | |
| C24MAS403BT50A90 | A | 6 | 50 | 24 | 85 | 45 | 35 | 23 | 25 | 17 | 90 |
| C24MAS403BT50B90 | B | - | | | | | | | | | |

* Questo tirante è senza sede per O-Ring / * These pull studs do not have the O-Ring seat

** a richiesta / on request

CODOLI A NORMA MAS 403 BT TYPE I
STANDARD MAS 403 BT TYPE I PULL STUDS



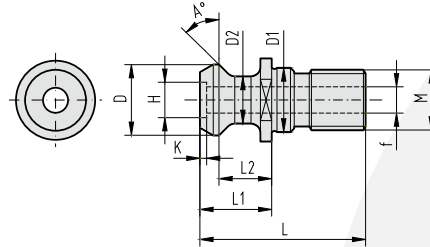
| ARTICOLO-ITEM | TIPO-TYPE | f | CONO-SIZE | M | L +/-0,5 | L1 -0,1 | L2 -0,1 | D -0,1 | D1 h7 | D2 -0,1 | A° |
|-----------------|-----------|---|-----------|----|----------|---------|---------|--------|-------|---------|----|
| C16MAS403I40A45 | A | 4 | 40 | 16 | 57 | 32,15 | 25,15 | 15 | 17 | 10 | 45 |
| C16MAS403I40B45 | B | - | | | | | | | | | |
| C16MAS403I40B90 | B | - | 40 | 16 | 57 | 32,15 | 25,15 | 15 | 17 | 10 | 90 |



2026/03/30

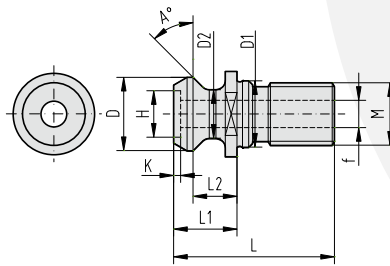


CODOLI A NORMA MAS BT ANSI TYPE
STANDARD MAS BT ANSI TYPE PULL STUDS



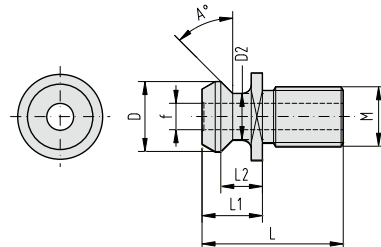
| ARTICOLO-ITEM | TIPO-TYPE | f | CONO-SIZE | M | L | L1 +/-0,127 | L2 +/-0,127 | D +/-0,127 | D1 h7 | D2 +/-0,127 | A° | H +0,06 | K +/-0,05 |
|------------------------|-----------|----|-----------|----|--------|-------------|-------------|------------|-------|-------------|----|---------|-----------|
| C16MASBTANSI40A | A | 7 | 40 | 16 | 44,106 | 19,106 | 13,85 | 18,78 | 17 | 12,95 | 45 | - | - |
| C24MASBTANSI50A | A | 10 | 50 | 24 | 65,20 | 25,20 | 17,58 | 28,956 | 25 | 20,828 | 45 | 16 | 1,80 |

CODOLI A NORMA CAT ANSI TYPE
STANDARD CAT ANSI TYPE PULL STUDS



| ARTICOLO-ITEM | CONO-SIZE | f | M | L | L1 +/-0,127 | L2 +/-0,127 | D +/-0,127 | D1 h7 | D2 +/-0,127 | A° | H +0,06 | K +/-0,05 |
|----------------------|-----------|----|----|--------|-------------|-------------|------------|-------|-------------|----|---------|-----------|
| C16CATANSI40A | 40 | 7 | 16 | 41,256 | 16,256 | 11,176 | 18,796 | 17 | 12,446 | 45 | - | - |
| C24CATANSI50A | 50 | 10 | 24 | 65,40 | 25,40 | 17,78 | 28,956 | 25 | 20,828 | 45 | 16 | 1,80 |

CODOLI A NORMA ANSI 5.50 CATERPILLAR
STANDARD ANSI 5.50 CATERPILLAR PULL STUDS



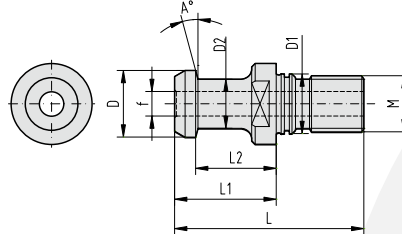
| ARTICOLO-ITEM | CONO-SIZE | M | L | L1 +/-0,1 | L2 +/-0,1 | D +/-0,1 | D2 +/-0,1 | A° | f |
|-------------------------|-----------|----|-------|-----------|-----------|----------|-----------|----|-------|
| C16ANSIB5_50/40A | 40 | 16 | 38 | 16,25 | 11,20 | 18,80 | 12,40 | 45 | 7,1 |
| C24ANSIB5_50/50A | 50 | 24 | 58,40 | 25,40 | 17,80 | 28,95 | 20,80 | 45 | 11,90 |



2026/03/30



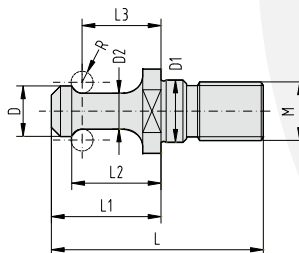
CODOLI A NORMA BT (JIS B 6339)
 STANDARD BT (JIS B 6339) PULL STUDS



| ARTICOLO-ITEM | CONO-SIZE | f | M | L | L1-0,1 | L2-0,1 | D f7 | D1 h7 | D2-0,1 | A° |
|-----------------|-----------|----|----|----|--------|--------|------|-------|--------|----|
| C16BTJISB40/A5 | 40 | 5 | 16 | 54 | 29 | 23 | 19 | 17 | 14 | 15 |
| C16BTJISB40/A7 | 40 | 7 | 16 | 54 | 29 | 23 | 19 | 17 | 14 | 15 |
| C24BTJISB50/A10 | 50 | 10 | 24 | 74 | 34 | 25 | 28 | 25 | 21 | 15 |

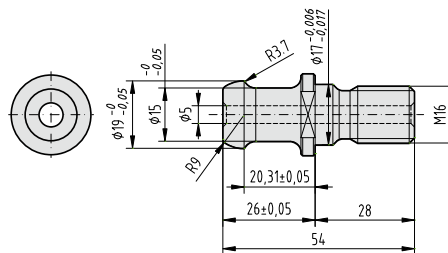
CODOLI PER VARIE TIPOLOGIE DI MACCHINE A CNC
 PULL STUDS FOR DIFFERENT TYPE OF CNC MACHINES

CODOLI FAMUP
 FAMUP PULL STUDS

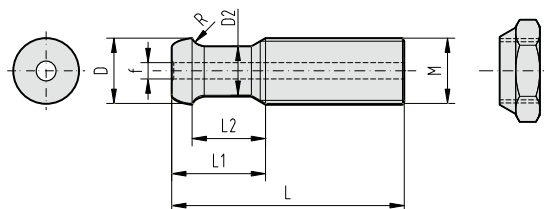


| ARTICOLO-ITEM | CONO-SIZE | f | M | L | L1 | L2 | L3 | D-0,1 | D1 h6 | D2-0,1 | R |
|---------------|-----------|---|----|----|----|-------|------|-------|-------|--------|-----|
| C12FAMUPL40 | 30 | - | 12 | 40 | 20 | 16,65 | 14,2 | 9,8 | 13 | 5,8 | 2,5 |
| C16FAMUPL55 | 40 | - | 16 | 55 | 27 | 21,43 | 18,6 | 13,8 | 17 | 9,8 | 3 |
| C16FAMUPL58 | 40 | - | 16 | 58 | 30 | 24,43 | 21,6 | 13,8 | 17 | 9,8 | 3 |

CODOLO CB FERRARI
 CB FERRARI PULL STUD
 ARTICOLO-ITEM: C16FERRL54A
 CONO-SIZE: 40



CODOLI CB FERRARI
 CB FERRARI PULL STUDS



| ARTICOLO-ITEM | CONO-SIZE | f | M | L | L1 | L2 | D-0,05/0,1 | D1 | D2-0,1 | R |
|---------------|-----------|---|----|----|----|----|------------|----|--------|-----|
| C16FERRL57A | 40 | 4 | 16 | 57 | 23 | 18 | 16 | - | 12 | 3,2 |
| C16FERRL57B | 40 | - | 16 | 57 | 23 | 18 | 16 | - | 12 | 3,2 |



2026/03/30



DISEGNO PER ORDINI DI CODOLI SPECIALI
 TECHNICAL DRAWING FOR ORDERING SPECIAL PULL STUDS

I Se siete interessati a codoli speciali non compresi nel presente catalogo, inviateci questa pagina debitamente compilata; sarà nostra cura servirVi al meglio e con la massima tempestività.

GB If you are interested in special Pull Studs not included in this Catalogue, please fill this page in and send it to us: we shall do our best to provide you with prompt, efficient service.

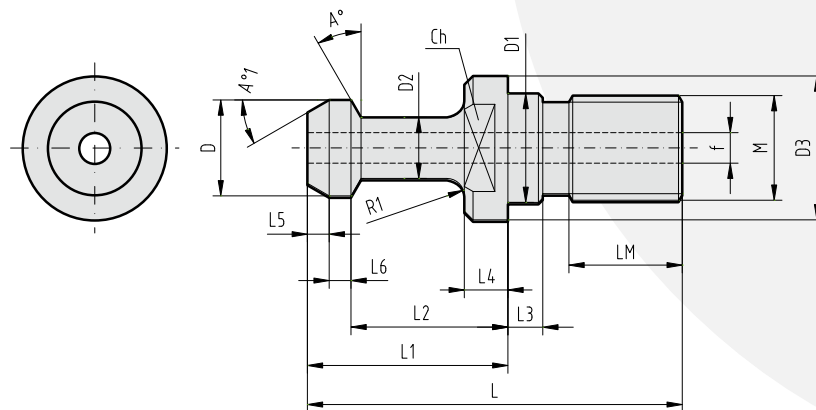
BRIGHETTI MECCANICA S.r.L.
 Tel./Phone: 0039 51 728168 E.mail: info@brighetti.it

Società/Company: _____

Indirizzo/Address: _____

Tel./Phone: _____ E-mail: _____

Q.tà/Q.ty: _____



| | | | | | | | | |
|---|----|----|----|----|----|-----|----|----|
| M | L | L1 | L2 | L3 | L4 | L5 | L6 | LM |
| | | | | | | | | |
| D | D1 | D2 | D3 | f | A° | A°1 | R1 | Ch |
| | | | | | | | | |



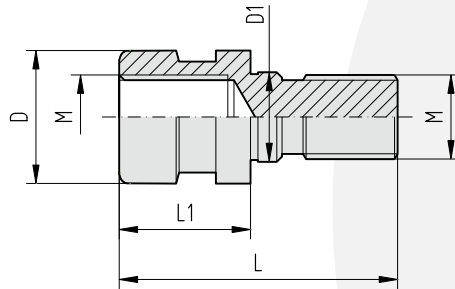
2026/03/30



Adattatori Adaptors

I L'Adattatore serve per la trasformazione di mandrini a norma DIN 69871 e BT a norma DIN 2080. Nello stesso tempo è anche tirante di riduzione tipo OTT SYSTEM.

GB The adaptor changes the boring bars from Standard DIN 69871 and BT to Standard DIN 2080. In the mean time, the adaptor is also a reduction pull stud type OTT SYSTEM.



| ARTICOLO-ITEM | CONO-SIZE | M | L | L1 | D | D1 h7 |
|----------------|-----------|----|----|----|------------------------|-------|
| C16 OTT SYS 40 | 40 | 16 | 53 | 25 | 25,3 -0,30 -0,38 | 17 |
| C16 OTT SYS 50 | 50 | 24 | 65 | 25 | 39,6 -0,31 -0,41 | 25 |



2026/03/30



BRIGHETTI MECCANICA

*Made in Italy
since 1977*



2026/03/30



www.aiebv.com

AKKERMANS INDUSTRIAL ENGINEERING B.V.
Vijfhuizenberg 103A • 4708AJ Roosendaal (Noord-Brabant) • Nederland
T +31 (0)165 - 224140 • info@aiebv.com • www.aiebv.com
KvK 20040320 • BTW nr. 005358012B01
IBAN NL33 RABO 0141 2525 10